

# Reduce your cash handling costs

CashComplete® allows retailers to cut the costs of cash management. This streamlined, closed system saves money on cash handling and administration. And staff saves valuable time otherwise spent on manual cash handling.

## AND THE SOLUTIONS

### Increase security

A closed and secure system reduces the risks of robberies and theft, providing a safer working environment and the potential to cut insurance premiums.

### Cut cash processing costs

An efficient, streamlined system with transaction tracking eliminates unnecessary counting and reconciliation routines.

### Reduce shrinkage

A secure system with state-of-the-art sensor technology for accurate counting is the right basis for reducing shrinkage and increasing profitability.

### Improve customer service

With cashiers spending less time handling and counting cash, the result is faster, better service and reduced queuing time.

### Minimise staff training

Only very brief training is required to operate a point of sale system with an intuitive interface. This improves checkout management, as staff deployment is more flexible.

CashComplete® removes a number of time-consuming routines from the cashier's working day. At the start of the shift, there is no need to set up the till with a cash float. During the working day, cashiers do not have access to coins and notes in the system. Time saved on counting, sorting and bundling cash can be spent focusing on customer service. And, at the end of the day there is no need to balance the till.

There are similar time savings for back-office staff. Less time is spent bringing coins from the back-office, counting coins, preparing float packages, processing notes, and making end-of-day reports. The instant audit trail means that cash does not have to be counted over and over again.

CashComplete® enables a more streamlined workflow with fewer stages and considerably reduces total cash handling costs.

## Return on investment

A rapid return on investment stems from a number of related factors:

- ▶ Time savings gained in areas such as cash administration and staff training
- ▶ Minimised cash discrepancies
- ▶ Increased security
- ▶ Cost savings on cash handling fees

# Your complete partner

SCAN COIN is a global provider of cash handling solutions with a worldwide sales and service organisation serving our customers wherever they operate.

The SCAN COIN commitment to reliability doesn't end with the final product. Various types of service agreements are offered to ensure optimum operation and maximum availability.

SCAN COIN provides software-supported cash processing solutions for retail, banking, CIT/cash centres, the transport sector and the gaming & amusement industry. As a well-established partner to many of the most respected players in these segments, we have developed a wide range of solutions to meet their high demands for daily performance and maximum long-term reliability.

Our experience serving some of the world's most demanding customers has helped us in our continuing drive to develop innovative products and systems for the retail sector.

## A comprehensive range for retail

SCAN COIN is the complete partner for cash handling solutions in the retail sector. The sheer diversity of the retail sector calls for a wide spectrum of flexible solutions to meet various needs. SCAN COIN offers a comprehensive range of cash processing solutions – from compact counters to complete cash handling systems.

### SCAN COIN solutions for retail

- ▶ CashComplete® – a closed end-to-end solution securing the entire cash loop.
- ▶ CoinCasher® – customer-friendly self-service system for coin deposits, generating new profit for the retailer.
- ▶ RCS (Retail Cash System) – designed to fully automate the in-store cash office, suppling and depositing cash between shifts.
- ▶ For the back-office, SCAN COIN supplies a full range of automated coin/note counters and sorters that make cash processing routines more accurate and efficient.
- ▶ Software solutions are available for a wide range of applications, including monitoring and keeping track of cash and data flow giving retailers an overview of their cash processing operations.



CashComplete® is a registered trademark within the European Union and in Norway, Switzerland, Russia, the US, Australia and China.

Founded in 1966, SCAN COIN is one of today's leading suppliers of cash processing equipment, system solutions and services. Our worldwide customer base is served through a network of SCAN COIN companies and distribution partners covering some 120 countries. SCAN COIN develops, manufactures and markets equipment and integrated solutions for handling bank-notes and coins, and has become a world leader in the automatic cash processing market.

## SCAN COIN

SCAN COIN AB | Jägershillgatan 26 | SE-213 75 Malmö | Sweden  
Phone int. +46 40 600 06 00 | Fax +46 40 600 07 00 | E-mail: info@scancoin.se | Internet: www.scancoin.com

### SCAN COIN COMPANIES

SCAN COIN Svenska AB  
SCAN COIN A/S  
SCAN COIN A/S  
SCAN COIN Ltd.  
SCAN COIN Ireland Ltd.  
SCAN COIN -PERCONTA GmbH  
SCAN COIN North America Inc.  
SCAN COIN S.L.  
SCAN COIN Ltd.  
SCAN COIN-Borsu Systema B.V.  
SCAN COIN Belgium  
SCAN COIN France  
ServiCash Ltd.

### ADDRESS

Gustav III:s boulevard 46 | SE-169 73 Solna | Sweden  
Rosenholmveien 25 | NO-1410 Kolbotn | Norway  
Smedelands 6 | DK-2600 Glostrup | Denmark  
Dutch House | 110 Broadway | Salford Quays | M50 2JW | UK  
Bracetown Business Park | Clonee | Co Meath | Ireland  
Sylvesterallee 2 | DE-225 25 Hamburg | Germany  
20145 Ashbrook Place | Suite 110 | Ashburn VA 20147-3375 | USA  
Tomás Bretón | 31-35 Local 7 | 08950 Esplugues de Llobregat | Barcelona | Spain  
Room 1301-2 | 13/F. Eassey Commercial Building | 253 - 261 Hennessy Road | Wanchai | Hong Kong  
Van Weerden Poelmanweg 23 | NL-3768 MN Soestduinen | The Netherlands  
4, rue de la Presse | BE-1000 Bruxelles | Belgium  
93, Parc Pereire | B.P. 60864 | FR-78108 Saint-Germain-en-Laye Cedex | France  
Rua Campos Junior, 7-A | 1070-306 Lisboa | Portugal

### PHONE

+46 8 555 282 00  
+47 66 81 34 00  
+45 43 63 06 44  
+44 161 873 0500  
+353 1 801 4077  
+49 40 547 6130  
+1 703 729 8600 | 800 336 3311 (Toll free)  
+34 902 446 777  
+852 2590 6438  
+31 35 603 98 88  
+32 2 223 75 30  
+33 1 39 04 05 50  
+351 21 760 90 44

### E-MAIL

info@sve.scancoin.se  
info@scancoin.no  
info@scancoin.dk  
sales@scancoin.co.uk  
sales@scancoin.ie  
info@scancoin.de  
inquiry@scancoin-usa.com  
info@scancoin.es  
clam@scancoin.com.hk  
info@scts.nl  
info@scancoin.fr  
info@scancoin.fr  
servicash@mail.telepac.pt



# CashComplete®

BY SCAN COIN

## – for a closed and secure retail cash loop



 **SCAN COIN**

# Stores have become cash hubs

Cash continues to flow into the retail sector. Paying with notes and coins is as popular as ever and retailers are taking on a range of new cash handling roles. The challenge for retail is how to handle these volumes without higher costs for both cash processing and increased security.

## The cost of popularity

The popularity of cash continues. Cash remains Europe's favourite method of payment\*. Increasingly, cash is converging on the retail sector. Retailers are taking on more cash handling roles, primarily within banking and post office services. How can retailers handle these greater volumes cost-effectively and provide a higher level of security?

As a long established partner in retail, SCAN COIN understands the cash handling challenges the sector faces. Our continuous trend analysis and close co-operation with international retailers have given us the insight to develop an innovative and flexible cash handling concept that answers current and future needs. In short, a complete solution for retail.

\* World Payments Report 2006  
by Cap Gemini.



## A more secure future

Improved cash handling security makes retail personnel feel more secure at their workplace. Contented staff interact better with customers, creating a more attractive retail environment.

## THE TOP 5 CHALLENGES...

- Security** ▶  
Exposed cash and long opening hours can increase the risk of robberies.
- Cash processing costs** ▶  
Cost savings in cash handling and administration is a priority for reaching maximum profitability and competitiveness.
- Shrinkage** ▶  
Shrinkage due to theft, internal errors and cash counting discrepancies takes a bite out of stores' turnover.
- Customer service** ▶  
Customer service is a competitive advantage that can be improved to provide an edge over competitors.
- Staff training** ▶  
In a sector with high staff turnover, the training required for point of sale systems is a continuous drain on resources.

**Introducing the perfect choice for secure, scalable and profitable cash handling**

# CashComplete®

BY SCAN COIN

CashComplete® by SCAN COIN is a closed end-to-end solution securing the entire cash loop.

This flexible system can be configured to suit any retail setting from stores of all sizes to fast food outlets and petrol stations.

Notes paid into CashComplete® POS unit at the till remain unexposed and securely stored until they reach their intended destination such as the back-office or cash centre.

World-leading sensor technology counts the coins and notes into the system, minimising the risk for counting errors, shrinkage and rejecting counterfeit coins and notes.

With its fine balance between capacity and size, CashComplete® POS is designed to fit existing counters. The unit has been sensitively designed for both current and future checkout styles.

On the software side, CashComplete® allows smooth integration with existing EPOS applications.

Cash is tracked in an instant digital audit trail as it flows through the CashComplete® solution. Each transaction from all point of sale units, transport units and docking stations is logged on-line, providing a clear overview of the entire system.

**Back-office holding**  
of CashComplete® Transport precedes CIT collection or internal routines. One alternative is to empty the transport unit at this point.

**CIT collection**  
ensures safe pick up of CashComplete® Transport and takes it to the cash centre.

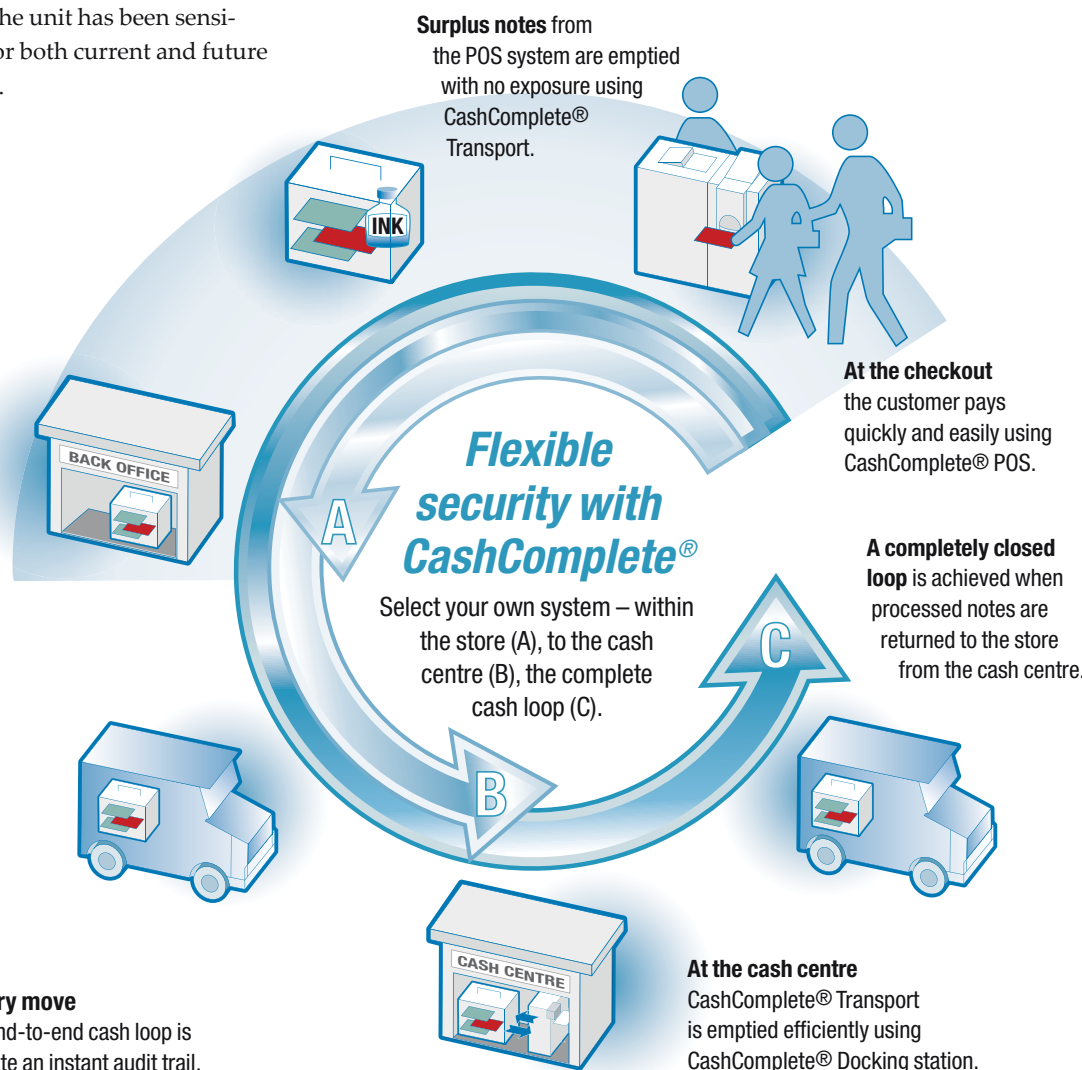
**Monitor and trace every move**  
Each transaction in the end-to-end cash loop is registered on-line to create an instant audit trail.

**Surplus notes from the POS system are emptied with no exposure using CashComplete® Transport.**

**At the checkout**  
the customer pays quickly and easily using CashComplete® POS.

**A completely closed loop**  
is achieved when processed notes are returned to the store from the cash centre.

**At the cash centre**  
CashComplete® Transport is emptied efficiently using CashComplete® Docking station.



## The CashComplete® solution – as easy as 1, 2, 3



### CashComplete® POS

The point of sale system is a compact, closed system allowing customers to pay easily and quickly using notes and coins, and receive their correct change. Notes are inserted in a single slot, and the cashier does not have to sort manually. Every note and coin can be re-cycled and cashback becomes an option.



### CashComplete® Transport

The transport unit empties surplus notes from CashComplete® POS – with no exposure. Several versions with various security features meet different needs. Once full, the transport unit is taken to the back-office for CIT collection or internal processing.



### CashComplete® Docking

The docking station is used to empty CashComplete® Transport. Various security levels and features will be offered depending on the selected location, which can be in the back-office area of the store or at the cash centre to empty the transport unit on arrival.

Software is an important integrated thread in the system, logging all transactions of the three elements of CashComplete®.

## COMPLETE SATISFACTION

CashComplete® is a true end-to-end solution offering a wide range of benefits for retailers:

- ▶ Reduces robberies and theft
- ▶ Cuts cash handling costs
- ▶ Minimises counting discrepancies
- ▶ Maximises counterfeit protection
- ▶ Encourages in-store cash recycling
- ▶ Minimises staff training due to intuitive interface
- ▶ Enables flexible cashier deployment

- ▶ Shifts cashier focus to customer service
- ▶ Improves cashiers' working environment
- ▶ Easy to integrate with existing hardware and software systems
- ▶ Fits current and future checkout styles
- ▶ Upgradeable system – hardware and software – as needs change
- ▶ Compact size

