

SCAN COIN

K6

Modular Premium



4+2 Pocket Fitness Sorter

SCAN COIN

Dual pocket expandable module and flexible pocket assignment system. Maximized cash handling productivity with easy configuration for diverse sorting and pocket accessibility.

Efficient Working Privilege

- Dual pocket expandable (max 12 pocket)
- Flexible & easy pocket assignment
- Reject pocket as same location with the others

Easy Maintenance

- Wide opened pocket design
- Simple path
- Reliable push mechanism

Diverse Sorting System

- Multi/auto currency
- Pocket capacity max 500 (for ATM cassette)



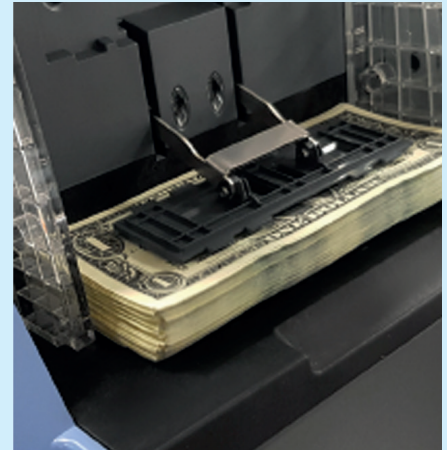
Reject Indicator Lamp

Easy recognition of suspected notes



Pocket Capacity

Efficient volume for ATM cassette (max 500)

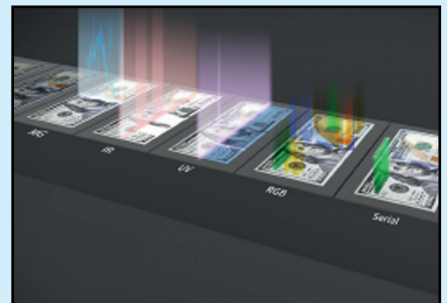
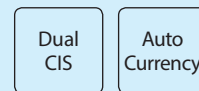


Hopper Pusher

Supported insert of notes stably

Technical Specifications

# of Pockets	Main 4+2, Ext. 2~12 (6 module)
Hopper Capacity	1000
Stacker Capacity	500
Reject Capacity	Reject 1-100, Reject 2-200
Normal Count	1000
Value Count	1000
Fitness Speed	1000
S/N Speed	1000
Dimension (W/H/D)	Main 731 X 534 X 392mm - Ext (2P) 276 X 348 X 392mm
Weight	Main 55kg, Ext 10kg
Functions	Multi curr. 20 auto, Mix, Batch card face&orientation S/N (OCR), Fitness
S/N Reading	0
Fitness (F type)	0
Currency	12
Sensor	Dual CIS, UV, MG(18ch), IR, US
Connectivity/ Interface	Serial port x 4 LAN x 2 (normal & debug) - USB x 1
OS	Linux
Screen	7" touch display (800 X 480 Pixels)
Options & Special Features	Dual pocket extendable structure - Interactive pocket structure Batch card support - Support external data screen



*Specification subject to change without notice.